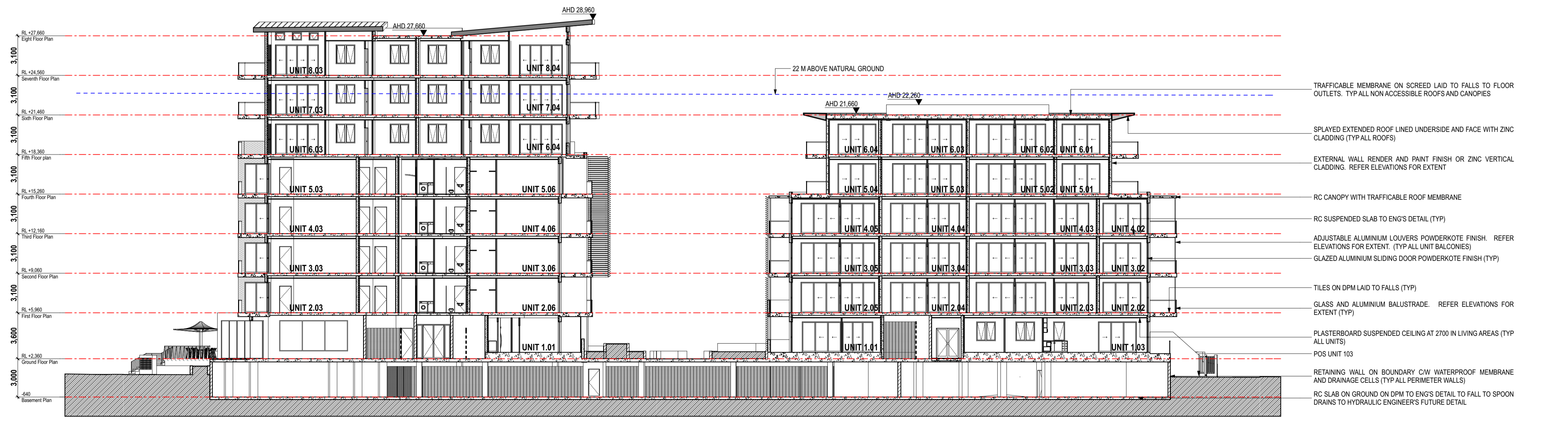
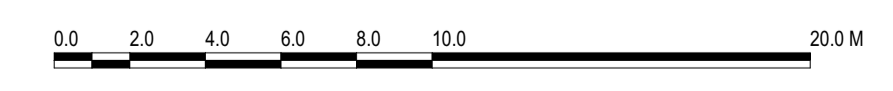


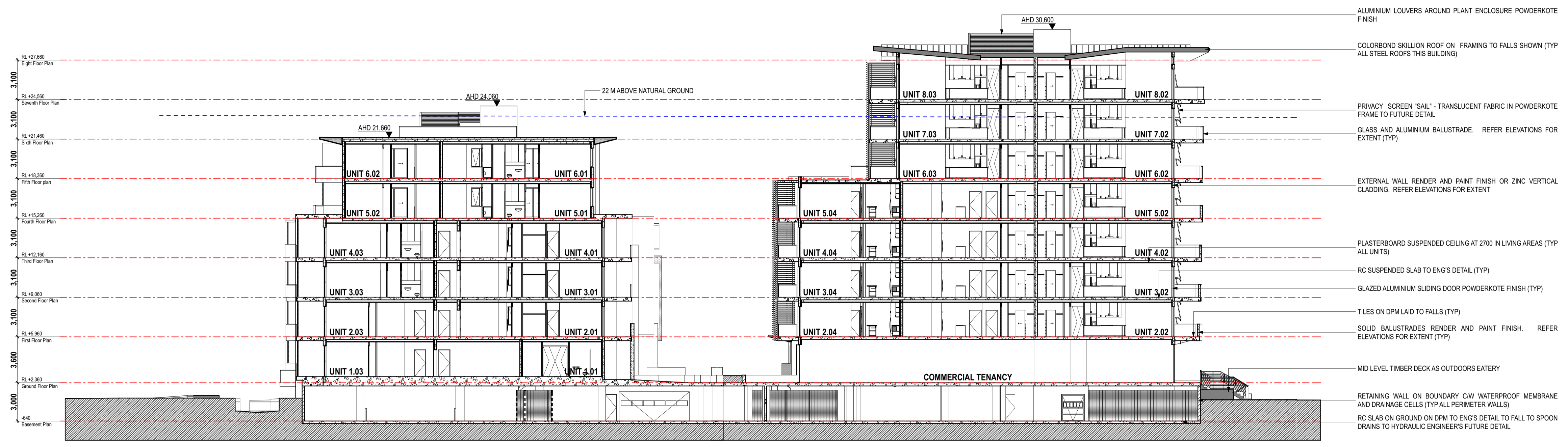
1 Section AA thru buildings C and D facing East



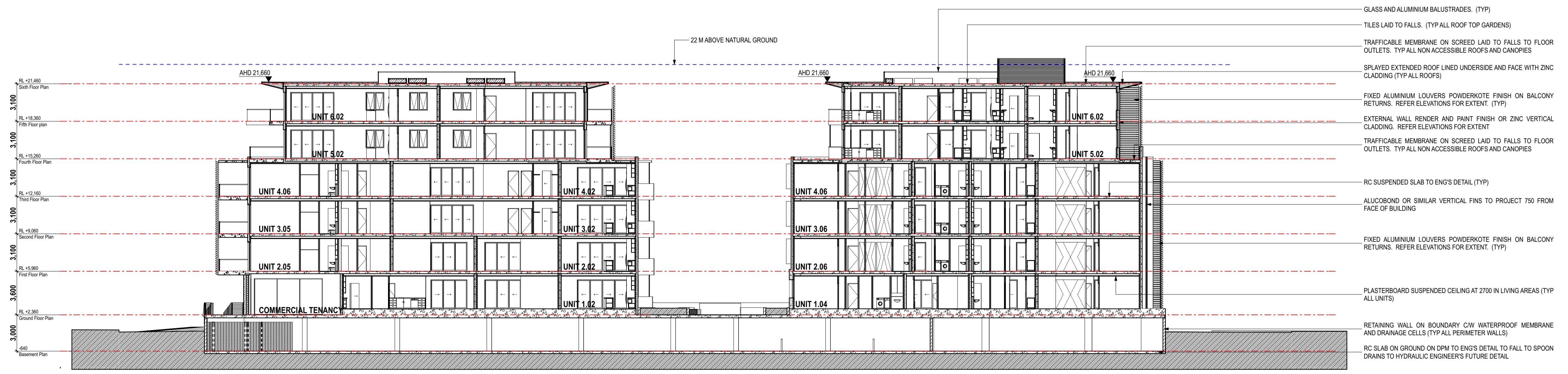
2 Section BB thru buildings A and D facing North



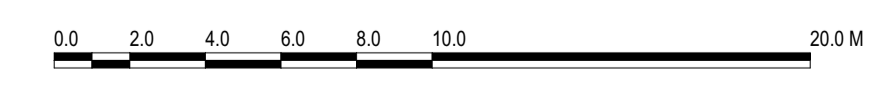
	
64A Hamilton Street Mont Albert Vic 3127 Phone: (03) 9899 6471 Fax: (03) 9899 6515 Email: coeve1@coevedesign.com.au Web: www.coevedesign.com.au	
Project: BROOKS PARADE	
Drawing Title: SECTIONS	
Client: ---	Date: 05 MAY 2017
Scale: 1:200 AT A1	Revision: 31 AUG 2018
Drawn By: CDB	Project No: ---
Project No: ---	Drawing No.: DA15-D
Plot Date: ---	1/9/18



1 Section CC thru buildings A and B facing East



2 Section DD thru buildings B and C facing North



	
64A Hamilton Street Mont Albert Vic 3127 Phone: (03) 9899 6471 Fax: (03) 9899 6515 Email: coeve1@coevedesign.com.au Web: www.coevedesign.com.au	
Project: BROOKS PARADE	
Drawing Title: SECTIONS	
Client: ---	
Scale: 1:200 AT A1	Date: 1 FEB 2018
Drawn By: CDB	Revision: 31 AUG 2018
Project No: ---	Drawing No.: DA16-B
Plot Date: ---	1/9/18

The builder shall check and verify all dimensions and verify all errors and omissions to the Architect. Do not scale the drawings. Drawings shall not be used for construction purposes until issued by the Architect for construction.

BUILDING A

UNIT No	LEVEL	TYPE	AREA	BALCONY	ORIENTATION	CROSS VENTILATION	SOLAR ACCESS BALCONY	SOLAR ACCESS LIVING	SOUTH ASPECT	OPENABLE KITCHEN WINDOWS	LIVABLE HOUSING COMPLIANT	POTENTIAL ADAPTABLE UNIT
1.01	Ground Floor	3-BED	109 M2	21 M2	N&E	Y	>3 HR	>3 HR			Y	
2.01	First Floor	3-BED + STUDY	113 M2	35 M2	S&E	Y	>2 HR				Y	
2.02	First Floor	3-BED + STUDY	112 M2	43 M2	S&W	Y					Y	
2.03	First Floor	2-BED + STUDY	91 M2	23 M2	W						Y	
2.04	First Floor	2-BED + STUDY	98 M2	23 M2	N&W	Y	>2 HR	>2 HR			Y	
2.05	First Floor	2-BED + STUDY	100 M2	10 M2	N&E	Y	>2 HR	>3 HR			Y	
2.06	First Floor	2-BED + STUDY	97 M2	18 M2	E		>3 HR	>2 HR			Y	
3.01	Second Floor	3-BED + STUDY	113 M2	35 M2	S&E	Y	>2 HR				Y	
3.02	Second Floor	3-BED + STUDY	112 M2	44 M2	S&W	Y					Y	
3.03	Second Floor	2-BED + STUDY	91 M2	23 M2	W						Y	
3.04	Second Floor	2-BED + STUDY	98 M2	23 M2	N&W	Y	>3 HR	>3 HR			Y	
3.05	Second Floor	2-BED + STUDY	100 M2	21 M2	N&E	Y	>3 HR	>3 HR			Y	
3.06	Second Floor	2-BED + STUDY	97 M2	18 M2	E		>3 HR	>2 HR			Y	
4.01	Third Floor	3-BED + STUDY	113 M2	35 M2	S&E	Y	>3 HR				Y	
4.02	Third Floor	3-BED + STUDY	112 M2	48 M2	S&W	Y					Y	
4.03	Third Floor	2-BED + STUDY	91 M2	23 M2	W						Y	
4.04	Third Floor	2-BED + STUDY	98 M2	23 M2	N&W	Y	>3 HR	>3 HR			Y	
4.05	Third Floor	2-BED + STUDY	100 M2	21 M2	N&E	Y	>3 HR	>3 HR			Y	
4.06	Third Floor	2-BED + STUDY	97 M2	18 M2	E		>3 HR	>2 HR			Y	
5.01	Fourth Floor	3-BED + STUDY	113 M2	35 M2	S&E	Y	>3 HR	>2 HR			Y	
5.02	Fourth Floor	3-BED + STUDY	112 M2	49 M2	S&W	Y					Y	
5.03	Fourth Floor	2-BED + STUDY	91 M2	23 M2	W						Y	
5.04	Fourth Floor	2-BED + STUDY	98 M2	23 M2	N&W	Y	>3 HR	>3 HR			Y	
5.05	Fourth Floor	2-BED + STUDY	100 M2	21 M2	N&E	Y	>3 HR	>3 HR			Y	
5.06	Fourth Floor	2-BED + STUDY	97 M2	18 M2	E		>3 HR	>2 HR			Y	
6.01	Fifth Floor	3-BED + STUDY	112 M2	28 M2	S&E	Y	>3 HR	>2 HR			Y	
6.02	Fifth Floor	3-BED + STUDY	112 M2	50 M2	S&W	Y					Y	
6.03	Fifth Floor	3-BED + STUDY	108 M2	48 M2	N&W	Y	>3 HR	>3 HR			Y	
6.04	Fifth Floor	3-BED + STUDY	108 M2	31 M2	N&E	Y	>3 HR	>3 HR			Y	
7.01	Sixth Floor	3-BED + STUDY	112 M2	39 M2	S&E	Y	>3 HR	>2 HR			Y	
7.02	Sixth Floor	3-BED + STUDY	112 M2	52 M2	S&W	Y					Y	
7.03	Sixth Floor	3-BED + STUDY	108 M2	47 M2	N&W	Y	>3 HR	>3 HR			Y	
7.04	Sixth Floor	3-BED + STUDY	108 M2	39 M2	N&E	Y	>3 HR	>3 HR			Y	
8.01	Seventh Floor	3-BED + STUDY	112 M2	39 M2	S&E	Y	>3 HR	>2 HR			Y	
8.02	Seventh Floor	3-BED + STUDY	112 M2	54 M2	S&W	Y					Y	
8.03	Seventh Floor	3-BED + STUDY	108 M2	47 M2	N&W	Y	>3 HR	>3 HR			Y	
8.04	Seventh Floor	3-BED + STUDY	108 M2	39 M2	N&E	Y	>3 HR	>3 HR			Y	
37	Units		3,862 M2	1,184 M2		29	26	23	0	0	29	0

BUILDING B

UNIT No	LEVEL	TYPE	AREA	BALCONY	ORIENTATION	CROSS VENTILATION	SOLAR ACCESS BALCONY	SOLAR ACCESS LIVING	SOUTH ASPECT	OPENABLE KITCHEN WINDOWS	LIVABLE HOUSING COMPLIANT	POTENTIAL ADAPTABLE UNIT
1.01	Ground Floor	2-BED	73 M2	22 M2	S&E	Y	>2 HR	>2 HR			Y	Y
1.02	Ground Floor	2-BED + STUDY	89 M2	21 M2	N&E	Y	>3 HR	>3 HR			Y	Y
1.03	Ground Floor	1-BED + STUDY	54 M2	14 M2	N		>3 HR	>3 HR			Y	Y
1.04	Ground Floor	2-BED + STUDY	91 M2	14 M2	N		>3 HR	>3 HR			Y	Y
2.01	First Floor	2-BED + STUDY	93 M2	29 M2	S&E	Y				Y	Y	Y
2.02	First Floor	2-BED + STUDY	90 M2	21 M2	N&W	Y	>3 HR	>3 HR			Y	Y
2.03	First Floor	1-BED + STUDY	54 M2	14 M2	N		>3 HR	>3 HR			Y	Y
2.04	First Floor	1-BED + STUDY	54 M2	14 M2	N		>3 HR	>3 HR			Y	Y
2.05	First Floor	2-BED + STUDY	87 M2	27 M2	N&W	Y	>3 HR	>3 HR			Y	Y
2.06	First Floor	2-BED + STUDY	78 M2	17 M2	W					Y	Y	Y
2.07	First Floor	3-BED + STUDY	110 M2	33 M2	S&W	Y				Y	Y	Y
3.01	Second Floor	2-BED + STUDY	93 M2	29 M2	S&E	Y	>2 HR	>2 HR			Y	Y
3.02	Second Floor	2-BED + STUDY	90 M2	21 M2	N&W	Y	>3 HR	>3 HR			Y	Y
3.03	Second Floor	3-BED + STUDY	111 M2	28 M2	N		>3 HR	>3 HR			Y	Y
3.04	Second Floor	2-BED + STUDY	87 M2	27 M2	N&W	Y	>3 HR	>3 HR			Y	Y
3.05	Second Floor	2-BED + STUDY	78 M2	17 M2	W					Y	Y	Y
3.06	Second Floor	3-BED + STUDY	110 M2	33 M2	S&W	Y				Y	Y	Y
4.01	Third Floor	2-BED + STUDY	93 M2	29 M2	S&E	Y	>2 HR	>2 HR			Y	Y
4.02	Third Floor	2-BED + STUDY	90 M2	21 M2	N&W	Y	>3 HR	>3 HR			Y	Y
4.03	Third Floor	3-BED + STUDY	111 M2	28 M2	N		>3 HR	>3 HR			Y	Y
4.04	Third Floor	2-BED + STUDY	87 M2	27 M2	N&W	Y	>3 HR	>3 HR			Y	Y
4.05	Third Floor	2-BED + STUDY	78 M2	17 M2	W					Y	Y	Y
4.06	Third Floor	3-BED + STUDY	110 M2	33 M2	S&W	Y				Y	Y	Y
5.01	Fourth Floor	2-BED + STUDY	84 M2	15 M2	S&E	Y	>3 HR	>2 HR			Y	Y
5.02	Fourth Floor	2-BED	79 M2	24 M2	N&E	Y	>3 HR	>3 HR			Y	Y
5.03	Fourth Floor	3-BED	100 M2	60 M2	N&W	Y	>3 HR	>3 HR			Y	Y
5.04	Fourth Floor	2-BED + STUDY	86 M2	35 M2	S&W	Y					Y	Y
6.01	Fifth Floor	2-BED + STUDY	84 M2	15 M2	S&E	Y	>3 HR	>2 HR			Y	Y
6.02	Fifth Floor	2-BED	79 M2	27 M2	N&E	Y	>3 HR	>3 HR			Y	Y
6.03	Fifth Floor	3-BED	100 M2	37 M2	N&W	Y	>3 HR	>3 HR			Y	Y
6.04	Fifth Floor	2-BED + STUDY	86 M2	29 M2	S&W	Y					Y	Y
31	Units		2,456 M2	714 M2		22	22	22	0	15	16	12

BUILDING C

UNIT No	LEVEL	TYPE	AREA	BALCONY	ORIENTATION	CROSS VENTILATION	SOLAR ACCESS BALCONY	SOLAR ACCESS LIVING	SOUTH ASPECT	OPENABLE KITCHEN WINDOWS	LIVABLE HOUSING COMPLIANT	POTENTIAL ADAPTABLE UNIT
1.01	Ground Floor	3-BED + STUDY	122 M2	15 M2	S&E	Y	>3 HR	>3 HR			Y	Y
1.02	Ground Floor	2-BED + STUDY	83 M2	19 M2	N&E	Y	>3 HR	>3 HR			Y	Y
1.03	Ground Floor	1-BED + STUDY	68 M2	10 M2	N		>3 HR	>3 HR			Y	Y
1.04	Ground Floor	1-BED + STUDY	63 M2	14 M2	N		>3 HR	>3 HR			Y	Y
1.05	Ground Floor	2-BED + STUDY	88 M2	14 M2	N&W	Y	>3 HR	>3 HR			Y	Y
1.06	Ground Floor	3-BED	105 M2	18 M2	S&W	Y					Y	Y
2.01	First Floor	2-BED + STUDY	93 M2	10 M2	S&E	Y	>3 HR	>2 HR		Y	Y	Y
2.02	First Floor	1-BED + STUDY	64 M2	14 M2	N&E	Y	>3 HR	>3 HR			Y	Y
2.03	First Floor	2-BED + STUDY	83 M2	25 M2	N&E	Y	>3 HR	>3 HR		Y	Y	Y
2.04	First Floor	1-BED + STUDY	68 M2	14 M2	N		>3 HR	>3 HR			Y	Y
2.05	First Floor	1-BED + STUDY	63 M2	14 M2	N		>3 HR	>3 HR			Y	Y
2.06	First Floor	2-BED + STUDY	80 M2	15 M2	N&W	Y	>3 HR	>3 HR			Y	Y
2.07	First Floor	2-BED	77 M2	18 M2	S&W	Y				Y	Y	Y
2.08	First Floor	2-BED	84 M2	19 M2	S	Y			S		Y	Y
3.01	Second Floor	2-BED + STUDY	93 M2	10 M2	S&E	Y	>3 HR	>2 HR		Y	Y	Y
3.02	Second Floor	1-BED + STUDY	64 M2	14 M2	N&E	Y	>3 HR	>3 HR			Y	Y
3.03	Second Floor	2-BED + STUDY	83 M2	25 M2	N&E	Y	>3 HR	>3 HR		Y	Y	Y
3.04	Second Floor	1-BED + STUDY	68 M2	14 M2	N		>3 HR	>3 HR			Y	Y
3.05	Second Floor	1-BED + STUDY	63 M2	14 M2	N		>3 HR	>3 HR			Y	Y
3.06	Second Floor	2-BED + STUDY	80 M2	15 M2	N&W	Y	>3 HR	>3 HR			Y	Y
3.07	Second Floor	2-BED	77 M2	18 M2	S&W	Y				Y	Y	Y
3.08	Second Floor	2-BED	84 M2	19 M2	S	Y			S		Y	Y
4.01	Third Floor	2-BED + STUDY	93 M2	10 M2	S&E	Y	>3 HR	>2 HR		Y	Y	Y
4.02	Third Floor	1-BED + STUDY	64 M2	14 M2	N&E	Y	>3 HR	>3 HR			Y	Y
4.03	Third Floor	2-BED + STUDY	83 M2	25 M2	N&E	Y	>3 HR	>3 HR		Y	Y	Y
4.04	Third Floor	1-BED + STUDY	68 M2	14 M2	N		>3 HR	>3 HR			Y	Y
4.05	Third Floor	1-BED + STUDY	63 M2	14 M2	N		>3 HR	>3 HR			Y	Y
4.06	Third Floor	2-BED + STUDY	80 M2	15 M2	N&W	Y	>3 HR	>3 HR			Y	Y
4.07	Third Floor	2-BED	77 M2	18 M2	S&W	Y				Y	Y	Y
4.08	Third Floor	2-BED	84 M2	19 M2	S	Y			S		Y	Y
5.01	Fourth Floor	3-BED	111 M2	14 M2	S&E	Y	>2 HR	>3 HR			Y	Y
5.02	Fourth Floor	2-BED	74 M2	30 M2	N&E	Y	>3 HR	>3 HR			Y	Y
5.03	Fourth Floor	2-BED + STUDY	80 M2	22 M2	N		>3 HR	>3 HR			Y	Y
5.04	Fourth Floor	2-BED + STUDY	94 M2	21 M2	N,S&W	Y	>3 HR	>3 HR			Y	Y
6.01	Fifth Floor	3-BED	111 M2	14 M2	S&E	Y	>2 HR	>3 HR			Y	Y
6.02	Fifth Floor	2-BED	74 M2	28 M2	N&E	Y	>3 HR	>3 HR			Y	Y
6.03	Fifth Floor	2-BED + STUDY	80 M2	22 M2	N		>3 HR	>3 HR			Y	Y
6.04	Fifth Floor	2-BED + STUDY	94 M2	21 M2	N,S&W	Y	>3 HR	>3 HR			Y	Y
38	Units		3,084 M2	648 M2		28	31	30	3	18	36	13

BUILDING D

UNIT No	LEVEL	TYPE	AREA	BALCONY	ORIENTATION	CROSS VENTILATION	SOLAR ACCESS BALCONY	SOLAR ACCESS LIVING	SOUTH ASPECT	OPENABLE KITCHEN WINDOWS	LIVABLE HOUSING COMPLIANT	POTENTIAL ADAPTABLE UNIT
1.01	Ground Floor	2-BED + STUDY	91 M2	26 M2	N&W	Y	>2 HR	>2 HR			Y	
1.02	Ground Floor	2-BED + STUDY	79 M2	48 M2	E	Y	>3 HR	>2 HR			Y	Y
1.03	Ground Floor	2-BED + STUDY	93 M2	57 M2	N&E	Y	>3 HR	>2 HR			Y	Y
2.01	First Floor	3-BED	103 M2	39 M2	S&E	Y	>3 HR	>2 HR			Y	Y
2.02	First Floor	2-BED + STUDY	90 M2	25 M2	N&E	Y	>3 HR	>3 HR		Y	Y	
2.03	First Floor	2-BED + STUDY	79 M2	23 M2	N		>3 HR	>3 HR			Y	Y
2.04	First Floor	1-BED + STUDY	54 M2	15 M2	N		>3 HR	>3 HR			Y	Y
2.05	First Floor	1-BED + STUDY	56 M2	28 M2	N&W	Y	>2 HR	>2 HR			Y	